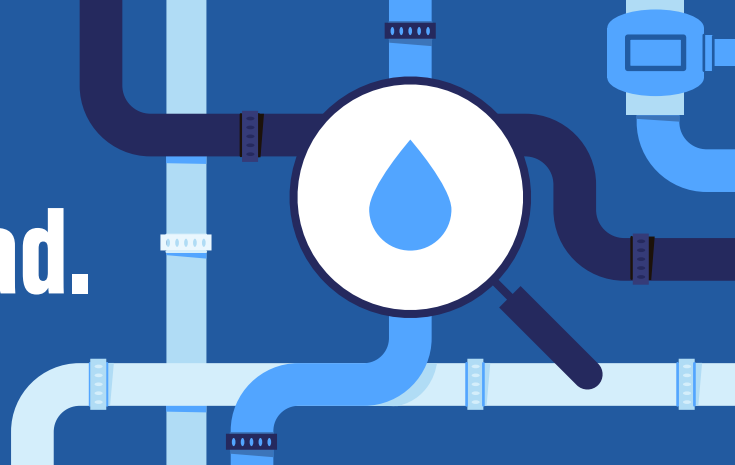


We're testing the school's water for lead.

Here's what you should know.



WHAT IS LEAD?

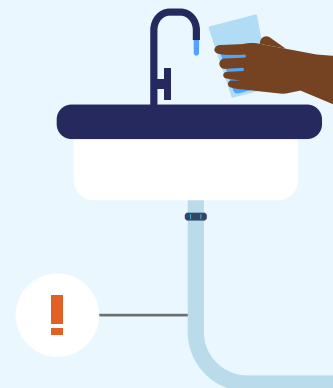
Lead is a heavy metal that can cause health problems if ingested (swallowed), especially for young children.



Scan the QR code to visit the South Dakota Department of Health's website and learn more about how lead can affect health.

HOW DOES LEAD GET INTO WATER?

Water doesn't naturally contain lead. However, if a building has older pipes, faucets, or water fountains made with lead materials, lead can enter the water when it sits in these fixtures.



WHY IS OUR SCHOOL TESTING ITS WATER?

Testing the water helps us keep students and staff healthy and safe. If we find lead in the water, we can take steps to fix the problem by replacing things like faucets, water fountains, and pipes that have lead in them.



ARE WE THE ONLY SCHOOL TESTING THE WATER?

Every school in the state will have to test their water eventually, but we volunteered to be one of the first. This means our school may get some funding to help remove any faucets, water fountains, or pipes made with lead materials we may find.



WHAT WILL HAPPEN IF THE TESTING FINDS LEAD?

The next steps depend on where the lead is found and how much is present.



The Environmental Protection Agency (EPA) recommends taking action if the amount of lead is greater than 10 parts per billion.



If that level of lead is found, we will take steps to remove faucets, water fountains, or pipes made with lead materials or make sure those water sources aren't used for drinking.

How testing works

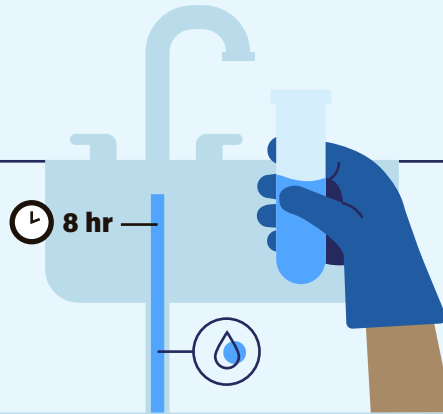
1

Professionals will test water from any faucet or fixture people might use for **drinking or cooking**.



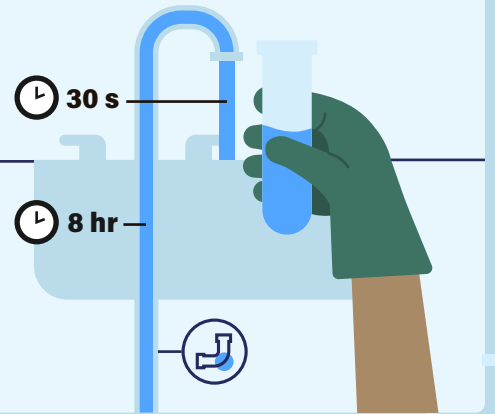
2

The first sample tests whether water absorbs lead when sitting in the **faucets and water fountains**. This sample will be taken after the faucet hasn't been used for at least eight hours.



3

The second sample tests whether the pipe right behind the fixture might include lead. The water will run for 30 seconds before this sample is taken.



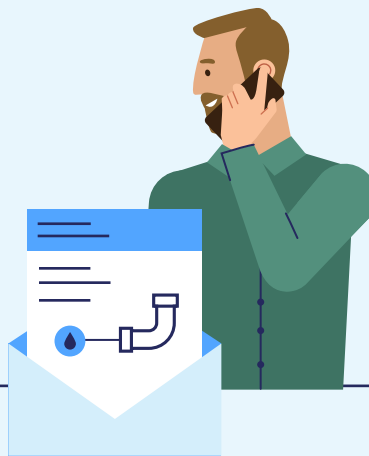
4

Samples will be tested by a lab that has been certified to meet EPA's requirements.



5

When South Dakota Department of Agriculture and Natural Resources knows the testing results, **they will communicate those results with us**.



6


The next steps depend on testing results and will be communicated with us as soon as results have been delivered.



WHO SHOULD I CONTACT IF I HAVE MORE QUESTIONS?

Pam Rudd, Business Manager

 Pam.Rudd@k12.sd.us

 (605) 263-3359

TESTING NOTICE

This program prioritizes testing for schools eligible for free and reduced lunches, but encourages all South Dakota schools to participate.